

# About TAMESIDE MAGAZINE

abouttameside.co.uk

f : abouttameside

@abouttameside

tamesidecommunitynews@gmail.com

YOUR  
FREE  
COPY

Scan to visit  
our website:



January 2026 - Local Business & Community News - Shopping & What's On guide

**DON'T MISS THE CHARACTER CURRY  
SEE PAGES 18 & 25**

**FREE 2026  
CALENDAR INSIDE!**

**Wishing all our readers and  
advertisers a Happy New Year!**



**FUNDING BOOST FOR MEALS GROUP**  
- PAGE 3 -



**MEET TEAM TAMESIDE**  
- PAGES 22 & 23 -



**RAW MILK ON SALE**  
- PAGE 6 -



# Welcome...

Pick up a copy from: Aldi, CO-OP, Active Tameside, Ashton Market Hall, Stalybridge Train Station, Droylsden Post Office, Ladysmith Shopping Centre and more!



## Contributors this issue

Howard Murphy - Tameside Markets - Jan Lord -  
Bobby Kent - Local Studies Library - TMBC - Tameside  
College - Luke Mirfin - Hyde Fundraisers - Massimino  
Malacrino - Cllr Denise Ward - Tax Assist -  
Cllr Eleanor Wills - Emma Alexander - George Dalton  
- Sarah Bevan - Tameside SEVA Meals Group -  
Angela Dawn Wild - Sam Shaw

The opinions expressed in our published works do not reflect the opinions of About Tameside or its Editors. Information contained in our published works have been obtained by About Tameside from sources believed to be reliable. However, neither About Tameside nor its authors guarantees the accuracy or completeness of any information published herein and neither About Tameside nor its authors shall be responsible for any errors, omissions, or claims for damages, including exemplary damages, arising out of use, inability to use, or with regard to the accuracy or sufficiency of the information contained in this publication.

All rights reserved. No part of any About Tameside published work may be reproduced, stored in a retrieval system, or transmitted in any form or by any means, electronic, mechanical, photocopying, recording, or otherwise, without written permission from the publisher.

## Highlights this issue...

FUNDING BOOST FOR MEALS GROUP.....	3
FARM SELLS RAW MILK.....	6
ASHTON MARKET WORK .....	8
RETURN OF THE CYBERMAN .....	10
YANKS EVENT FOR 2026.....	13
MENTAL HEALTH SUPPORT FROM ANGIE .....	14
FREE 2026 CALENDAR .....	16 & 17
CHARACTER CURRY .....	18
MEET TEAM TAMESIDE .....	22 & 23
QUIZ .....	24
HOWARDS PICTURES FROM THE PAST .....	30
WHAT'S ON .....	31

Deadline for our February 2026 issue is January 22nd

Email: [tamesidecommunitynews@gmail.com](mailto:tamesidecommunitynews@gmail.com)  
Read us online: [www.abouttameside.co.uk](http://www.abouttameside.co.uk)  
and join us on Facebook & Twitter!

### Email:

[tamesidecommunitynews@gmail.com](mailto:tamesidecommunitynews@gmail.com)

### Production Design

[production@abouttameside.co.uk](mailto:production@abouttameside.co.uk)

Ask about our cost effective advertising  
opportunities and special features in the magazine.

Email: [tamesidecommunitynews@gmail.com](mailto:tamesidecommunitynews@gmail.com)

Advertising terms and conditions available on request.

## Work set to start on more improvements to roads and public spaces in Stalybridge

Exciting changes are coming to Stalybridge as work begins on a series of further improvements designed to make the town centre more attractive, accessible, and welcoming for everyone who lives, works, and visits here.

Following feedback from local residents, businesses, and community groups, Tameside Council will start delivering six priority projects funded by the Government's Capital Regeneration Projects funding. These projects will bring greener spaces, safer pedestrian routes, upgraded lighting, and new areas for events and community activities.

### The improvements will focus on:

**Market Street** – creating a safer, more pedestrian-friendly route with wider pavements.

**Armentieres Square** – revitalising the heart of the town with improved space for play, art, and events with added heritage style lighting and planting.

**Trinity Street** – enhancing links and improving traffic flow to the Victoria

Market Hall and  
Astley Cheetham  
Art Gallery &  
Library.

**Grosvenor Square** – adding greenery and vibrant spaces for people to enjoy.

**Corporation Street** – improving footways and connections.

**Old Town Hall Gardens** – transforming it into a welcoming green space.

This work builds on improvements already made on the refurbishment of the Victoria Market Hall and events programme that has been successfully running over the last year bringing everything from comedy nights to Candlelit concerts and beaches to the town. There have also been lighting and public realm updates including permanent festoon lighting around Armentieres Square.



Work started last month at Old Town Hall Gardens, with further phases continuing throughout 2026. The Council is also working on design plans to improve the Stalybridge War Memorial, ensuring it remains a proud tribute to the town's heritage.

Residents will be kept informed about any temporary changes to traffic or parking during the works, and regular updates will be shared online.

For more details and updates, visit: [www.tameside.gov.uk/stalybridgeregeneration](http://www.tameside.gov.uk/stalybridgeregeneration)

# FUNDING BOOST FOR TAMESIDE MEALS SEVA GROUP

➤➤ Tameside Meals SEVA Group. has been operating since August 2021 and has volunteers helping every week on Tuesdays when they make about 175-200+ meals for the most vulnerable in Tameside.

In November they were delighted to receive a donation of £500 from Dukinfield business Auxilium Services Limited. The presentation was made by their Operation's manager Muhammad Nasir and HR/Admin representative Fahad Ahmad to the volunteers at Hyde Town Hall. Muhammad said: "We've done quite a lot with the community, but we got introduced to Tameside Meals through Action Together and we are delighted to support the charity work in the community. We have supported charities for several years, but since 2023 we have had the opportunity to support more local charities. This has allowed us to



help make a positive change within the community, bringing people together and making a meaningful difference."

Kala Mandviwala from Tameside Meals SEVA Group said: "We would really like to thank Muhammad for coming and having a look at what we do making meals, primarily for the homeless community. I apply for small pockets of funding available locally in Tameside like

ASDA's community fund, Sainsbury's and Action Together. Today's donation is really welcomed from Auxilium and if anyone else would like to help please contact us through Action Together or email me [kala1962@hotmail.co.uk](mailto:kala1962@hotmail.co.uk)."

You can also find them on social media Facebook: @Tameside Meals Seva Group and Instagram: @tmsevagroup.



## TAMESIDE'S AWARD WINNING GARAGE

British Independent Garage Of The Year Awards - Tameside Business Awards

MOT - SERVICING - REPAIRS - DIAGNOSTICS - TYRES



**GUIDE BRIDGE**  
**MOT & SERVICE**

Call us now to arrange your MOTs, Service and Repairs.

We look forward to seeing you again.

Tel: 0161 339 5354 visit [www.guidebridgemot.co.uk](http://www.guidebridgemot.co.uk)





# Train Tameside 500: Building Local Skills, Changing Local Lives

»» The Train Tameside 500 campaign, in partnership with Tameside Council, aims to create 500 training and employment opportunities through collaboration between further education and local industry.

As one of the key ambassadors for the initiative, Tameside Council is leading by example, championing apprenticeships and skills development within its own workforce and across the wider community. The organisation has committed to its own target of hiring 50 apprentices a year.

Cllr Leanne Feeley, Tameside Council Executive Member for Lifelong Learning and Culture said: *"It's all about giving people a chance to succeed. It's important to have someone believe in you and help you take the first couple of steps in your career, and everyone deserves that chance. I'm passionate about making sure people in Tameside, especially those who might need our support the most, get the opportunity to learn, grow and thrive. It's not just about skills it's about changing lives."*

That belief in opportunity underpins much of what Tameside Council does, with the council's investment in development reaching across its many departments and divisions.

The council, as Cllr Feeley explains, is heavily invested in building a stronger and more resilient organisation to support local residents.

Cllr Feeley said: *"It's important to us that local people have real chances to learn, grow and build careers. By offering apprenticeships, work experience and training, we're helping people to do this. It also helps us build a stronger organisation, with the skills we need now and in the future. It's simply*



*the right thing to do."*

The Train Tameside 500 project is already paying off for the organisation. Through its apprenticeship and training programmes, Tameside Council has been able to attract talented local people to their workforce and offer existing staff new progression routes. The results can be seen in both the improved diversity of the workforce and the innovation it brings.

Cllr Feeley said: *"It's helping us build a stronger and more representative organisation and it's brought in fresh ideas, improved how we work and helped us plan for the future. It's also made us a more attractive place to work, as people see that we care about development and want to grow talent from within Tameside."*

That commitment to local skills underpins the Train Tameside 500 mission. The campaign encourages employers across a wide variety of sectors to take on the borough's residents as apprentices and reap the benefits of what they can provide to their business.

Cllr Feeley said: *"Go for it and make it part*



*of your long-term plan. It isn't just good for your business, it's good for your community. Work with local schools and colleges and think about how you can support people who might not have had many chances before. The rewards for your team, your business and your borough are well worth it."*

Tameside Council's investment in skills and key role in Train Tameside 500 stand as proof of how the initiative is already benefitting an employer. If you or your organisation would like to #JoinTT500 and become a Train Tameside 500 ambassador, then contact the college's Apprenticeships team: [apprenticeships@tameside.ac.uk](mailto:apprenticeships@tameside.ac.uk) or call 0161 908 6608.

Find out more:

JOIN TRAIN  
TAMESIDE 500  
**#joinTT500**

[www.tameside.ac.uk](http://www.tameside.ac.uk)



# PRESSURE WITH HOUSEHOLD ENERGY BILLS INCREASING?

Did you know installing a new A-Rated Boiler could save you up to £195 per year.

(Which?)



**SPREAD THE  
COST OF  
YOUR NEW  
WORCESTER  
BOILER!**

From as little as  
**£25 per month!**

CALL US TODAY

**0161 336 4011**

**0% FINANCE  
AVAILABLE**

**UP TO 12 YEAR  
GUARANTEE**

ON BOILERS AND INSTALLED SYSTEM

**WE ALSO OFFER BOILER SERVICING & REPAIRS**

**S&M**

**PLUMBING & HEATING**

Albert Street, Denton, Manchester, M34 6LB  
[info@sandmplumbingandheating.co.uk](mailto:info@sandmplumbingandheating.co.uk)

**WORCESTER**  
Bosch Group



# TAKEN IN TAMESIDE

If you have a photo you would like to include, please email us at: [tamesidecommunitynews@gmail.com](mailto:tamesidecommunitynews@gmail.com)  
We'd love to hear from you!



## TAMESIDE'S LAST DAIRY FARM GETS GREEN LIGHT TO SELL DIRECT

After months of dedicated work, Oak Farm at Matley Lane in Stalybridge is now able to sell raw milk direct from the farm.

Farmer Steven Sherrat has spent a large part of the year going through the process that will allow the public to buy raw milk directly. "We've passed all the Food Standards Agency tests, and we are now registered as a supplier to sell to the public", said Steve "We have all the required certification that means you can come to the farm with your own plastic recycled bottle or purchase one here and get farm fresh milk. We are a working farm, but we'll make buying milk from us as accessible as we can, you can call us to arrange to collect or arrange to come down. We are also the last dairy farm in Tameside, family owned and we need to diversify. My wife Olivia and son Owen in January will be going on a

cheesemaking course, making butter and we'll also be looking at our own fresh ice cream too hopefully in time for Summer 2026.

The plan is to introduce a vending machine or a trailer we can take around Tameside to make our milk more widely available but that will be a future development. We've achieved this important first step so now we can work towards doing more." Steve's son Owen, age 10, is just as committed to the family business and said: "It's a low carbon business selling our raw milk and it's healthier than supermarket stuff! Even Haaland loves drinking raw milk and backs buying straight from farm and look how many goals he scores he's a Viking."

If you want to find out more, you can contact Oak Farm on 07794658047 07794669361 and via email [oliviasherratt86@outlook.com](mailto:oliviasherratt86@outlook.com)

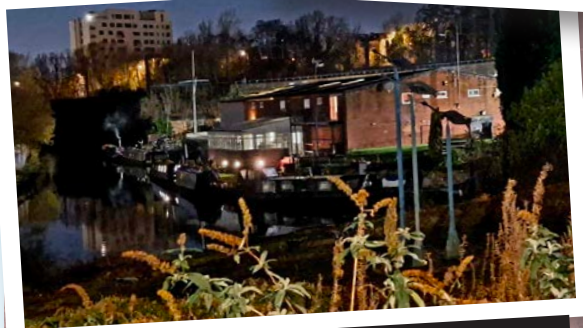
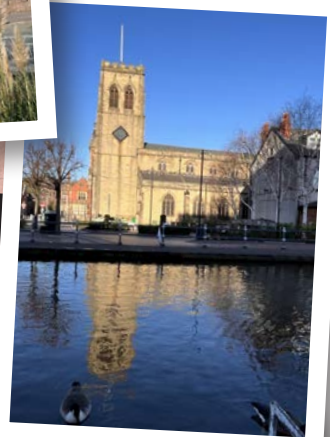


Hyde Park bandstand  
Sam Shaw



St Michael's & All Angels Church in Ashton  
Howard Murphy

Holy Trinity Church in Stalybridge  
Howard Murphy



Reflecting on Ashton Canal at night – Sam Shaw





# MARKET NEWS



## HAPPY NEW YEAR

**>>> On behalf of Tameside Markets and all their traders we would like to send our very best wishes for the New Year.**

Located adjacent to the mall entrance you can check out the delicious offerings of **Poppy's Fudge Pantry**. The shop has over 25 flavours of handmade fudge on offer available in pouches, gift boxes or by the piece if you prefer plus all major credit/debit cards are accepted too. Before you know it its Valentines, Mothers Day and family events so why not gift fresh flowers? There's **Twisted Lily** offering flowers for all occasions. The stall is open 9.30am-4pm Tuesday to Saturday and you can find them online at [www.twistedlily.uk](http://www.twistedlily.uk)

Whether it's a jacket potato or a freshly made sandwich, **Angie's Jackets** offers a range of breakfasts and lunches made to order as well as snacks and drinks, to order call 0161 368 6200.

Meanwhile at Ashton Market



Hall, **Magpie's haberdashery** has everything you need from buttons and ribbons to fabrics and needles and lots more to satisfy your creative needs. The staff are happy to offer their expertise to aid you on your next arts and crafts adventure. Have you visited our new stall selling beautiful unique gifts for all occasions called **Its.2.say?**

The stall is open Monday, Tuesday, Wednesday, Friday and Saturday 9am until 4pm, find them on Facebook too! If you are looking for great value footwear for all the family then pay a visit to **Goody Two Shoes**. Packed with shoes, boots, slippers, sandals with a great range of sizes available too.

For all your vinyl collectors this month sees the return of the **Real Deal Record Fair** to Ashton on Saturday January 17th.

*If you are looking to expand your growing business with a stall at one of our markets in Hyde or Ashton for further information, please contact: [markets@tameside.gov.uk](mailto:markets@tameside.gov.uk)*

### Ashton Market Presents



Ashton Market  
since 1971

your local market

markets@tameside.gov.uk

www.tameside.gov.uk/markets

@TamesideMarkets

0161 342 3266



## Ashton's Market Square regeneration takes shape as new kiosks arrive on site

**>>> Excitement is building in Ashton-under-Lyne as the first of the new market kiosks have started to arrive on site, marking a major milestone in the town's ambitious regeneration plans.**

Produced by modular specialists WhiteCrate, the kiosks form a key part of the wider transformation of this key civic space – a flagship regeneration project led by Tameside Council, with architectural design by Buttress, landscape design by Planit, technical consultancy from LK Group, and delivery support from Casey Construction. The new high-quality space will provide a flexible community space for events, markets, and cultural activities. The kiosks will be home to high quality food and drink traders, local produce and some retail and will operate alongside the general market traders.

Over recent months, extensive work has been underway both on site and behind the scenes, but the arrival of these fully finished kiosk represents more visible signs of progress for residents and visitors. The kiosks started being installed from Monday 16th November with support from HTF, local Tameside transport specialists, working alongside WhiteCrate to manage the complex logistics of positioning and installing the modular structures within the market square.

*"It's always exciting when a project moves from drawings and site prep to something tangible," said Jon Flowerdew, Managing Director of WhiteCrate. "Our modular approach means the kiosks arrive fabricated off-site facility in the North West — reducing disruption, accelerating delivery, and providing an immediate visual impact on site. This type of regeneration is exactly where modular construction comes into its own."*

Councillor Andrew McLaren, Deputy Leader and Executive Member for Growth, Housing and Homelessness, said:

*"Seeing the new market kiosks arrive marks an exciting moment for Ashton. These units represent not just a physical transformation, but the beginning of a new chapter for the town centre. Made in the North West the design quality and craftsmanship are exceptional, and it's great to see local partners like WhiteCrate,*

*Buttress, and HTF contributing to such a positive regeneration story for Tameside. If you are a business interested in taking on one of the new kiosks, you can contact a member of the Markets Team on [markets@tameside.gov.uk](mailto:markets@tameside.gov.uk) or 0161 342 3268."*

Buttress, the scheme's architects, have played a central role in developing a design that carefully integrates the new kiosks into Ashton's historic setting while creating a contemporary, vibrant marketplace.

Paul Hobson, senior architect at Buttress said: *"We have enjoyed working hand in hand with Tameside Council and WhiteCrate to create these unique kiosks and promote Ashton as a vibrant and aspirational destination marketplace. We hope the addition of the colourful kiosks can act as a catalyst for wider celebration of Ashton public realm and town centre improvement."* Working closely with WhiteCrate, the design team ensured that modular construction could deliver the high design quality and flexibility demanded by a modern market environment.

WhiteCrate, specialists in modular construction and placemaking, have worked closely with the project team to deliver a bespoke design that balances heritage context with contemporary functionality. The Ashton Market kiosks stand as an exemplar for how modular techniques can be used creatively in town centre regeneration — offering both efficiency and high design quality.

The installation of the kiosks marks an important step forward in the project, signalling the start of a visible transformation that will reinvigorate one of Ashton-under-Lyne's most historic community spaces.



### Steps to progress

Work has commenced on the restoration of Ashton Town Hall steps. This includes replacement of worn steps with natural sandstone, adding handrails with lights, refurbished steel gates and reinstatement of historic cannons on the plinths.

### A Warm Welcome

As temperatures drop and energy bills remain a concern for many, Tameside Council is once again supporting residents through its network of Warm Welcome Hubs. The hubs are free, safe and welcoming spaces located across the borough where people can spend time, connect with others and access useful facilities. [www.tameside.gov.uk/warm-welcome-hub](http://www.tameside.gov.uk/warm-welcome-hub).

### Food in the pantry

A new community pantry has opened at Sunflower childcare in Stalybridge and marked the launch of The Power of Resilience's third community pantry and its second based in the town. The new community pantry in conjunction with Sunflower Childcare Group and Jigsaw Homes Tameside.

### Ashton gets the lights!

At the December meeting of the full council Executive Member for Lifelong Learning and Culture, Cllr Leanne Feeley, announced that Ashton was set to be the host for the 2026 Northern Lights Winter Parade. The event traditionally marks the start of Tameside's festive celebrations and last year in Stalybridge it was reported to attract up to 7,000 people to the town.

### Monopoly takes chance

Monopoly Properties has acquired Clarence Arcade in Ashton, returning one of Tameside's most historically significant buildings to local stewardship to avoid the development of an HMO. Attention now turns to the future of Clarence Arcade, and the team behind the campaign are inviting residents, businesses, and local organisations to help shape the next chapter.

### Hospital MRI Upgraded

Tameside Hospital officially opened its newly refurbished MRI scanner suite in November following a 16-week transformation designed to make scans more comfortable, inclusive and child-friendly. The £1.5 million upgrade includes an array of new features aimed at reducing anxiety and creating a calmer environment for patients of all ages.

**Send your bulletins to:**  
[tamesidecommunitynews@gmail.com](mailto:tamesidecommunitynews@gmail.com)



# A TRULY PERSONAL ESTATE AGENT

**Sarah Bevan is a local personal estate agent covering Denton, Tameside, and surrounding areas.**

She's lived in the area for over 30 years and has a good grasp of the local market, the people and the community inside out — and passionate about helping people move with confidence, care and clarity.

Her career in estate agency began over twenty years ago, working for well-known corporate high street brands where she built a strong foundation in sales, negotiation and client service. Over time, she has also worked with independent local agents, giving her a valuable understanding of how different approaches operate — from the structure and systems of corporate agencies to the heart and flexibility of independent ones.

Sarah said "When you choose to work with me, you'll deal with me and only me. I'll be

*your single point of contact from valuation to completion — no being passed between departments, no unanswered calls. I'll handle everything personally, keeping you updated every step of the way so you never have to chase for information.*

*To make sure I can give every client my full care and attention, I only take on a select number of homes at any given time. This allows me to maintain the high standard of service my clients deserve — and it's why so many people I've worked with over the years stay in touch long after their sale completes!*

*For me, estate agency isn't just a career — it's a commitment to care. Whether you're selling your first home, upsizing, downsizing or simply curious about the market, I'll be here to offer honest advice, steady guidance and unwavering support.*

*Because your move matters — and with me, it's always handled personally."*

## Manchester Stairlifts moves to Denton

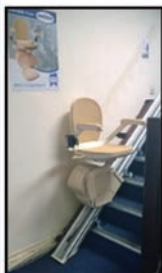
**The business has now moved its workshop and office to Windmill Lane in Denton.**

Whether you're looking for independence yourself, or peace of mind knowing Mum or Dad is safe - family

business Manchester Stairlifts are here to help. There's full warranty, aftercare service and most straight stairlifts can be fitted in 48 hours!

**For further details you can call 0161 330 5544 or visit [www.manchesterstairlifts.com](http://www.manchesterstairlifts.com)**

## MANCHESTER STAIRLIFTS



**Offering a range of new and reconditioned stairlifts. Minimum of 12 month's warranty inc parts, labour and call out charges. Free home survey before each installation. Curved and straight stairlifts are available - call us now for more details!**

### FIND US AT

**UNIT 3 - 7B**

**TAMESIDE BUSINESS PARK  
WINDMILL LANE, DENTON**

**M34 3QS Tel: 0161 330 5544  
[www.manchesterstairlifts.com](http://www.manchesterstairlifts.com)**



Find us on:  
**facebook® @Manchesterstairlifts**

## Thinking of Selling?

**Direct message me for a free consultation**

With many years of experience in estate agency dating back to 2002, I've had the privilege of helping countless clients find their perfect home. My approach is built on genuine communication, trust, and a calm steady hand—no matter how complex the process becomes. I pride myself on staying closely connected with my clients every step of the way, ensuring they always feel informed, supported and confident in their property decisions. Whether buying or selling, I'm here to make the experience as smooth and rewarding as possible

**Sarah Bevan**

**0161 388 7541**

[sarah.bevan@exp.uk.com](mailto:sarah.bevan@exp.uk.com)

[www.sarahbevan.exp.uk.com](http://www.sarahbevan.exp.uk.com)



**exp**  
REALTY



# RETURN OF THE CYBERMAN

Back in May 2025 Hyde Fundraisers contributed to the unofficial Doctor Who Exhibition at Peterborough Museum. Amongst the displays was their Cyberman, a replica of the chromed versions which featured in the Sylvester McCoy adventure 'Silver Nemesis'.

In 2023 it made a guest appearance as part of Doctor Who's 60th anniversary celebrations on BBC Breakfast. However, an accident at the museum resulted in some damage to the helmet, initially thought to just relate to the chrome but on inspection it proved to be more severe.

Originally the helmet itself had been made by Andrew Crombie from Hyde but twelve years ago it received its biggest enhancement when that, along with gun and chest piece, by approaching one of the UK's specialist companies in the field. ChromeSpray represents the most advanced technology in the production of effects paints, producing a high-grade chrome metal look or even the effect of polished aluminium. It is applied

with a conventional spray gun and can be coated over almost any paintable surface. This finish is very comparable to traditional chromium coatings.

So, when the damage occurred it seemed obvious to contact Simon Eklman again and see if they could help. On receiving the helmet, they realized it wasn't just damage to the chrome finish but also cracks and severe damage around one of the eyes too. So, before any work could be done on the helmet the specialist team set about repairing the damage and then extensive preparation

to the helmet to make the best possible surface for application of the product. Their skills came to fore to restore the Cyberman once again and bring him back into use for Hyde Fundraisers in their charity work.

***Chromespray, fxChromespray and powder offer their coating services at their well-equipped Basildon factory. Parts can be blasted, stripped and filled in preparation for any of our three painting processes. If you want to find out more about their services, you can visit [www.chromespray.co.uk](http://www.chromespray.co.uk)***



**Why not advertise in Tameside's monthly community magazine!**

**About TAMESIDE**

**PICK UP A COPY OR READ ONLINE AT [WWW.ABOUTTAMESIDE.CO.UK](http://WWW.ABOUTTAMESIDE.CO.UK)**

**For details about advertising please email us at [tamesidecommunitynews@gmail.com](mailto:tamesidecommunitynews@gmail.com)**



# Do you look after someone?

Tameside  
**Carers**  
-Centre-

**Tameside Carers Centre is here to  
make life a little easier.**


If you support a partner, family member, friend or neighbour, we offer a welcoming space for information, advice, or just a friendly chat and a brew.

**Our Wellbeing Advisors can help you with:**

- **Tailored emotional support**
- **Advice on benefits like Carer's Allowance**
- **Signposting to local services, social groups & activities**

**No appointment needed – just drop in!**

Monday, Tuesday, Thursday and Friday between 10am – 2pm

 The People Place, Tameside One, Market Place,  
Ashton-under-Lyne, OL6 6BH

 [www.tameside.gov.uk/carerscentre](http://www.tameside.gov.uk/carerscentre)

 0161 342 3344



Scan the QR  
code for more  
information



# The **A to Z** of Income Tax



Income tax in the UK can be complex, but understanding the basics helps you save money and stay compliant.

## **A is for Allowances**

Your personal allowance is the income you can earn before paying tax. It's reduced if you earn over £100,000. Other allowances include Marriage Allowance, personal savings allowance, and dividend allowance.

## **B is for Bands**

Income is split into basic, higher, and additional rate bands. You only pay the higher rates of tax on income above the basic threshold, not your entire earnings.



## **C is for CIS**

The Construction Industry Scheme affects how sub-contractors are taxed. Registered construction workers have 20% deducted; unregistered ones face 30%. Head contractors pass this to HMRC as a tax prepayment.

**Scan the QR code to read the full article.**

## **How TaxAssist Can Help**

TaxAssist Accountants can help you keep on top of your income tax obligations and make sure you're claiming all the allowances and reliefs to which you're entitled. Call 0161 359 6178 or visit us online.

**Ashton-under-Lyne Office:**  
344 Oldham Road OL7 9PS  
[taxassist.co.uk/ashton-under-lyne](http://taxassist.co.uk/ashton-under-lyne)

**Hyde Office: Hyde Park House,**  
Cartwright Street SK14 4EH  
[taxassist.co.uk/hyde](http://taxassist.co.uk/hyde)

**Stalybridge Office: Copley Mill,**  
Huddersfield Road SK15 2QF  
[taxassist.co.uk/stalybridge](http://taxassist.co.uk/stalybridge)

## Running your own business?

We can do **more** for you, giving you more time for the things you love.

- Business Accounts & Taxation
- Tax Returns
- Tax Planning
- Business Protection
- Payroll & HR
- Pensions
- Bookkeeping & VAT Returns
- Financial Planning

Book your free consultation Call 0161 359 6178

**TaxAssist**  
Accountants

ASHTON-UNDER-LYNE • HYDE • STALYBRIDGE  
[www.taxassist.co.uk/ashton-under-lyne](http://www.taxassist.co.uk/ashton-under-lyne)





# Monopoly Events announce Yanks event for 2026

**>>> The team that puts together Yanks events and Monopoly events have joined forces to stage next year's official events in Ashton under Lyne and Stalybridge, over the weekend of 1st & 2nd August 2026.**

Yanks is a 1979 film directed by John Schlesinger that explores the relationships between American soldiers stationed in Northern England and local British women during World War II. It was filmed on location in various locations like Stalybridge, Oldham, and Stockport with the film's lead star American actor Richard Gere.

What to expect at next year's Yanks event - Military and Classic Car Displays - Tea Dance - Military and Vintage Stalls - Indoor Craft Fair -

Yanks Film in Cinema - Big Swing Dance - Military and Classic Car Parade (Sunday Morning) - TBC Fly Past by BBMF - Live Entertainers.

Yanks organiser Paul Dogtags Higginson said: "We are delighted to have gained the support and backing of Monopoly Events who we believe can take the event to another level."

Monopoly Events CEO Andy Kleek said: "We are delighted to be involved with this event, it's so important to remember and celebrate our rich history, and bring our community together in the process."



**BESPOKE ASHES**  
IN JEWELLERY

By Spencer Grady

KEEP PART OF YOUR LOVED ONE WITH YOU FOREVER  
IN OUR STUNNING RANGE OF BESPOKE ASHES JEWELLERY

**GRADE**  
/// open.chin.pitch

0161 339 1777  
3 Market Avenue,  
Ashton-under-Lyne, OL6 6AR  
www.gradejewellery.co.uk  
info@gradejewellery.com

**decisions**  
designerwear for women

**BIG  
WINTER  
SALE**

**NOW ON**

**BIG Choice - BIG Savings - BIG Brands**

10, Fletcher Street, Ashton-under-Lyne

Facebook Tel: 0161 344 1615 @decisionsvsl

shop online at [www.decisionsclothing.com](http://www.decisionsclothing.com)



# IF YOU NEED HELP SUPPORT IS OUT THERE

➤➤ In recent years Angie Wild has established a number of community groups to help combat loneliness, support mental well-being and bring together ladies to help make new and lasting friendships. Here she gives us details of the various groups.

## Charity Crafters in aid of the Alzheimer's Society

We meet at the beautiful Seraphina Centre in Ashton on the 1st and 3rd Monday in the month.

It's a great way to support a wonderful cause and also raise vital funds through the sales of handmade items our talented crafters have made.

All materials are provided. Join us for a cuppa and a chat too.

## Wings of Hope Ladies Group

We meet at the gorgeous Seraphina Centre on the 2nd Monday in the month at 10.30am and Costa Coffee Ashton Moss on the 3rd Monday at 6pm.

I founded the group to support people experiencing bereavement and loss. A safe space to share your thoughts and support is available to help you through your grief.

As the group expanded we support ladies who are struggling with their mental health by guiding to the right support at the right time.

Ladies caring for loved ones can have that break to feel the comfort that 'you're not alone'.

With the support of Action Together Wings of Hope are now registered as constituted group. We have a committee and supported by

Lorraine Whitehead and Bernadette Hodgkinson. Amazing ladies who have been an asset to Wings of Hope.

I was contacted by a men's support group to enquire about meeting up with the ladies. I am delighted to offer a new group bringing men and ladies together. This happens on the last Friday of the month at Costa Coffee Ashton Moss from 6.30pm.

We have been supporting men and ladies with mental health issues to find the support they truly need.

This group has been a huge success and great to see conversations of how their experiences are when accessing vital support.

**Find out more about our wonderful groups by contacting Angie Wild evenings or weekends on 07980453022.**

## Council worker helping homeless into housing leads the way in awards celebration

➤➤ A Tameside homelessness worker has won an award after helping more than 100 people out of rough sleeping and into settled accommodation over the last year.

Tameside Council Rough Sleeper Co-ordinator Tom Butterworth was honoured at the Council's first ever STRIVE Awards for his exceptional service.

Tom has been described as "a wonderful member of staff" whose incredible achievements are a result of his person-centred approach that has been life changing for those he's worked with.

In his work, Tom prioritises prevention of any individual having to sleep rough and, where that's not possible, aims to ensure that any episode of rough sleeping is rare, brief, and non-recurring. He's overseen people moving directly from street to home and from emergency accommodation into homes of their own. Data shows the Council is reducing homelessness, whether long-term, entrenched or those returning to rough sleeping, which is against national trends.

The Council's STRIVE Awards took place at Dukinfield Town Hall on Thursday 27 November and were sponsored by Liberata, Hive Land and Planning, Constellia, Placecube, Robertson, The

MJ, Amazon Web Services, and Penna.

The eight awards celebrated the people and teams who bring the Council's STRIVE values to life – Support, Trust, Respect, Integrity, Value Diversity, and Engage – as well as an overall STRIVE award and a Place-based award inspired by Tameside's motto Industry and Integrity, to honour work that makes a meaningful difference to residents.

### **The winners were**

**Support:** Tameside Carers Centre

**Trust:** Tom Butterworth, Rough Sleepers team

**Respect:** Lorraine Kitching, Corporate Performance and Intelligence Team

**Integrity:** The Registrars Team

**Value Diversity:** Joanne Spurgeon, Employment and Skills Team

**Engage:** Ayesha Roberts and Carol Baguley, Public Health Community Engagement Team

**Place-based award:** Greenspace Team

**Overall STRIVE award:** Chairs of the Council's Employee Networks.

Nearly 500 peer-to-peer nominations were received recognising outstanding



contributions across the workforce and community.

Tameside Council Executive Leader Cllr Eleanor Wills said: "Well done to Tom for his remarkable achievements, which are transforming lives across Tameside. And congratulations to not only all the winners, who each had fantastic success stories on their support to communities around the borough, but to everyone shortlisted and nominated. It shows the depth of appreciation and support for each other's work that runs throughout the Council.

"These awards are driven by the STRIVE values that are at the heart of everything we do, and they celebrate the people and teams who bring these values to life. They play a key role in maintaining our culture of recognition, appreciation and pride in who we are and what we do.

"I'd like to thank the organisers, and everyone involved, for co-ordinating the awards, and our brilliant sponsors whose generosity enabled us to celebrate our colleague's achievements."



# Celebrating Iyengar Yoga

Manchester and District Iyengar Yoga, located at their centre on King Street in Dukinfield, was established back in 1972 and has been running classes in and around Manchester for over 40 years.



MDIY is the oldest and one of the largest Iyengar yoga organisations in the UK. They provide a wide range of opportunities for students to practise and develop their understanding of yoga and are committed to spreading an awareness of the benefits of Iyengar yoga to as many people as possible. The organisation is managed on behalf of its members by an elected committee of teacher and student members and all members are eligible to stand for election. They rely on and encourage the involvement of volunteer members in all of our activities. We are proud to be part of the UK and world-wide Iyengar yoga organisation which has similar organisations and centres in many countries of the world.

They are run as a mutual, membership organisation. Any surplus funds made from our yoga activities are re-invested in the maintenance and development of their building, the purchase and replacement of equipment and the day-to-day operations of MDIY.

*Classes are suitable for all levels and ages so if you want to discover more you can find them online at [www.manchesteryangayoga.org.uk](http://www.manchesteryangayoga.org.uk) or call their answerphone 0161 339 0748.*



**xoom**  
Greater Manchester Rides

Download  
our app  
and get  
£10 off

Promo Code:  
**tame924**

Search  
**Xoom Cars**



**0161 222 3333**

Download our APP - [xoomcar.app](http://xoomcar.app)



terms and conditions apply



THE HAT OUTLET

## Get ready for Autumn

Quote AUTUMN25 for 10% off all hats in our Denton shop

Find us at -

Building 9A, Unit 3  
Tameside Business Park,  
Windmill Lane, Denton  
M34 3QS



[WWW.THEHATOUTLET.COM](http://WWW.THEHATOUTLET.COM)

## Your First Iyengar Yoga Class - On Us!

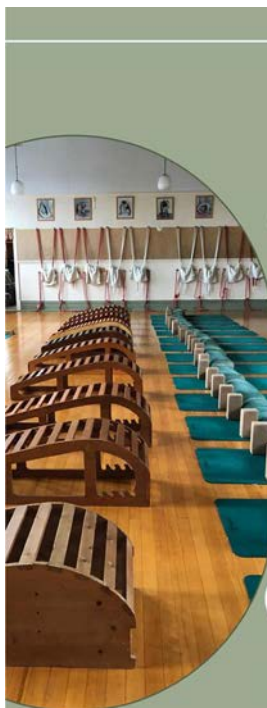
### VOUCHER

FIRST CLASS FREE  
FOR NEW VISITORS

Bring this leaflet for a  
FREE first class!  
(New students only -  
arrive 10 mins early)

DISCOVER THE BENEFITS OF  
IYENGAR YOGA

Visit Us  
Manchester & District Iyengar Yoga  
134 King St, Dukinfield SK16 4LG  
(Entrance on Cecil St.)  
07747 200 411 | 0161 339 0748  
info@mdiy.org.uk  
[manchesteryangayoga.org.uk](http://manchesteryangayoga.org.uk)





# About TAMESIDE MAGAZINE

## 2026 CALENDAR



Frosty Millbrook - Howard Murphy

### JANUARY

mo	tu	we	th	fr	sa	su
			1	2	3	4
5	6	7	8	9	10	11
12	13	14	15	16	17	18
19	20	21	22	23	24	25
26	27	28	29	30	31	



Canal at Edge Lane, Droylsden

### FEBRUARY

mo	tu	we	th	fr	sa	su
						1
2	3	4	5	6	7	8
9	10	11	12	13	14	15
16	17	18	19	20	21	22
23	24	25	26	27	28	



Denton Civic Square - Crane-fly Aerial

### MARCH

mo	tu	we	th	fr	sa	su
						1
2	3	4	5	6	7	8
9	10	11	12	13	14	15
16	17	18	19	20	21	22
23	24	25	26	27	28	29
30	31					



Scenic view in Mossley - Sam Shaw

### JULY

mo	tu	we	th	fr	sa	su
		1	2	3	4	5
6	7	8	9	10	11	12
13	14	15	16	17	18	19
20	21	22	23	24	25	26
27	28	29	30	31		



St Michael & All Angels Church, Ashton - Howard Murphy

### AUGUST

mo	tu	we	th	fr	sa	su
					1	2
3	4	5	6	7	8	9
10	11	12	13	14	15	16
17	18	19	20	21	22	23
24	25	26	27	28	29	30
31						



Memory Tree, Dukinfield Crematorium - Sam Shaw

### SEPTEMBER

mo	tu	we	th	fr	sa	su
	1	2	3	4	5	6
7	8	9	10	11	12	13
14	15	16	17	18	19	20
21	22	23	24	25	26	27
28	29	30				

1 JAN - NEW YEAR'S DAY  
5 JAN - TWELFTH NIGHT  
25 JAN - BURNS NIGHT  
14 FEB - VALENTINE'S DAY  
17 FEB - SHROVE TUESDAY/PANCAKE DAY  
17 FEB - LUNAR NEW YEAR

18 FEB - RAMADAN START  
15 MAR - MOTHER'S DAY  
17 MAR - ST. PATRICK'S DAY  
20 MAR - EID  
29 MAR - CLOCKS GO FORWARD  
3 APR - GOOD FRIDAY

5 APR - EASTER SUNDAY  
6 APR - EASTER MONDAY  
23 APR - ST. GEORGE'S DAY  
4 MAY - EARLY MAY BANK HOLIDAY  
25 MAY - WHIT MONDAY  
25 MAY - SPRING BANK HOLIDAY

TO ADVERTISE OR ENQUIRE ABOUT A FEATURE IN THE MA



Pick up your free copy from: Aldi, Active Tameside, Ashton Market Hall, Stalybridge Train Station, Droylsden Post Office, Ladysmith Shopping Centre and many more local independent retailers. Or download a copy from our website and read on the go!

**WWW.ABOUTTAMESIDE.CO.UK**   



Chartist Statue in Hyde - H. Eades

## APRIL

mo	tu	we	th	fr	sa	su
		1	2	3	4	5
6	7	8	9	10	11	12
13	14	15	16	17	18	19
20	21	22	23	24	25	26
27	28	29	30			



Old Ashton Library - David Taylor

## MAY

mo	tu	we	th	fr	sa	su
				1	2	3
4	5	6	7	8	9	10
11	12	13	14	15	16	17
18	19	20	21	22	23	24
25	26	27	28	29	30	31



Streetfest in Stalybridge - Craneelly Aerial

## JUNE

mo	tu	we	th	fr	sa	su
1	2	3	4	5	6	7
8	9	10	11	12	13	14
15	16	17	18	19	20	21
22	23	24	25	26	27	28
29	30					



Civic Hall Stalybridge - Howard Murphy

## OCTOBER

mo	tu	we	th	fr	sa	su
			1	2	3	4
5	6	7	8	9	10	11
12	13	14	15	16	17	18
19	20	21	22	23	24	25
26	27	28	29	30	31	



Dukinfield War Memorial - Sam Shaw

## NOVEMBER

mo	tu	we	th	fr	sa	su
						1
2	3	4	5	6	7	8
9	10	11	12	13	14	15
16	17	18	19	20	21	22
23	24	25	26	27	28	29
30						



Droylsden Tram Stop - K. Taylor

## DECEMBER

mo	tu	we	th	fr	sa	su
	1	2	3	4	5	6
7	8	9	10	11	12	13
14	15	16	17	18	19	20
21	22	23	24	25	26	27
28	29	30	31			

21 JUN - FATHER'S DAY  
21 JUN - SUMMER SOLSTICE  
31 AUG - SUMMER BANK HOLIDAY  
25 OCT - CLOCKS GO BACK  
31 OCT - HALLOWEEN  
5 NOV - GUY FAWKES/BONFIRE NIGHT

8 NOV - REMEMBRANCE SUNDAY  
8 NOV - DIWALI  
5 DEC - FIRST DAY OF HANUKKAH  
12 DEC - LAST DAY OF HANUKKAH  
21 DEC - WINTER SOLSTICE  
24 DEC - CHRISTMAS EVE

25 DEC - CHRISTMAS DAY  
26 DEC - BOXING DAY  
28 DEC - BANK HOLIDAY  
31 DEC - NEW YEAR'S EVE

**MAGAZINE, EMAIL US AT: [EDITOR@ABOUTTAMESIDE.CO.UK](mailto:EDITOR@ABOUTTAMESIDE.CO.UK)**



## CHARACTER CURRY PLANS HOT UP!

**In October last year local group Hyde Fundraisers announced they were to host another fundraising Character Curry at The Indian Plaza in Audenshaw in association with Councillor Denise Ward.**

The response has been amazing with local businesses and families booking places for the event taking place on Tuesday February 17th. Hyde Fundraisers have announced that in addition to BBC Children In Need they will also be making donations to The Ricky Hatton Foundation, Reuben's Retreat, Willow Wood Hospice and KidsCan. KidsCan is a children's cancer research charity based in Salford that funds research into new and improved treatments for children with cancer.

Steve Haines from Hyde Fundraisers said: "We are hoping people will be joining us for second helping of the Character Curry which will have a special visit from Wallace

& Gromit, BB8, Predator, The Joker and others visiting your table for great photo opportunities. There's also live music courtesy of performer Roger De Genero with some great ballads with a few numbers from young Jack Doyle and also a great prize raffle too!"

The raffle is being organised by Cllr Ward so if you would like to make a donation you can contact her via [Denise.Ward@tameside.gov.uk](mailto:Denise.Ward@tameside.gov.uk)

The evening starts at 6pm and will see ticket holders enjoy delicious poppadoms, chutneys and a tasty curry to support some really good causes. Not only that, but you will also have a unique character dining experience too. It's a great evening for all the family to enjoy and tickets are likely to get snapped up quickly.

**To book your place for adults it will be £20 and children under 10 years for £5 each - there are still places available but hurry - call 0161 371 7474.**

## RUNNING OUT OF SPACE?

After Christmas perhaps you have bought new furniture, clothes, toys or appliances and are struggling for room?

Tameside Storage Centre in Dukinfield offers a variety of storage options to suit your needs either long term or temporary.

It gives you a perfect

opportunity to declutter your home or to make space if you are decorating or have building work planned.

*They can also help with insurance and packing materials too, for more information give them a call on 0161 343 5588 or email [info@tamesidestoragecentre.co.uk](mailto:info@tamesidestoragecentre.co.uk)*

## Want to advertise in our free monthly magazine?

**About Tameside is the borough's favourite pick-up for everything happening locally! So why not give your business or event a boost in 2026!**

**Our magazine is available in key locations in Tameside, including: Travel hubs, Active Tameside, Tameside Markets, Local Shopping Centres, Libraries and many more!**

**For more details email:**

**[tamesidecommunitynews@gmail.com](mailto:tamesidecommunitynews@gmail.com)**



# TAMESIDE STORAGE CENTRE

- **CLEAN, DRY & SECURE STORAGE UNITS**
- **PERSONAL, DOMESTIC & BUSINESS**
- **LONG AND SHORT TERM OFFERS**
- **BOXES & PACKAGING AVAILABLE**
- **FULFILMENT SERVICES**

**Fromac Works - Junction Street  
Hyde - SK14 4QN - \*T&Cs apply  
Tel: 0161 343 5588 / 07909 993558  
[tamesidestoragecentre.co.uk](http://tamesidestoragecentre.co.uk)**



# START 2026 WITH BE WELL TAMESIDE

## New year, new challenges?

Whether it's quitting tobacco or smoking, eating better, or moving more, **Be Well Tameside** can give you **free**, friendly advice and support to make positive changes.



Scan the QR code for  
more information



 [www.tameside.gov.uk/bewelltameside](http://www.tameside.gov.uk/bewelltameside)

 0161 342 5050

## • Denton Local History Society Needs Your Help •

The Society was formed in 1978 and since then it has collected Denton memorabilia, including artefacts and photos of Denton's past.

In addition the Society has been involved in many local projects, including the renovation of the bandstand in Victoria Park, the excavation of the long gone Denton Hall on Windmill Lane and the preservation of Denton Magistrate Court and its removal to the Police Museum in Manchester.

The Bandstand was restored by the Denton & Audenshaw District

Assembly assisted by the Denton Local History Society and funded by Heritage Lottery Fund.

In addition the society has put on public annual free exhibitions about Denton's history and, in particular, involving children from local primary schools. We answer questions about Denton's history from all over the world, as well as nationally, from families of Dentonian ancestry who are researching their family's past.

Recently we have had to vacate our archive premises at Denton's Festival Hall which we have occupied for many years, due to its change

of use. Our artefacts have gone into a storage unit, the above activities have ceased and we face an uncertain future.

Tameside MBC have no alternative premises for us and we are appealing for anyone who can provide accessible storage for us, to continue our work in preserving Denton's history.

*If you can help, please contact  
Lynne Quirk on 07779978269 or  
Allan Arrowsmith on 0161 292  
1109, email:-  
[lynneclintonquirk@gmail.com](mailto:lynneclintonquirk@gmail.com)*





# A Musical Festive Feast for Willow Wood



On November 30th Ashton's Albion Church was the venue for a Festival of Christmas Music in aid of Willow Wood Hospice. The event, organised by Chris and Jojo Hinds, brought together Ashton-under-Lyne Brass Band and The Accord Choir performing two and a half hours of Christmas music. Invited guests included the civic Mayor of Tameside, Cllr Shibley Alam, Vice-Lord Lieutenant Sharman Birtles and Deputy Lieutenant Mark Llewellyn.

**Photographs by Massimino Malacrino**





# MEET TEAM TAMESIDE

As we enter 2026 Councillor Eleanor Wills is now well into her second year as Executive Leader of Tameside Council and in November the borough welcomed new Chief Executive Emma Alexander. Here we have the first part of our interview, where we refer to Emma as CE and Eleanor as EL.

## **We started by asking how difficult was it to select a new chief exec?**

**EL:** I'm not going to lie; it felt a really big responsibility.

We've obviously been on a journey over the last 12 months to try and rebuild public trust, but broader than that, a stronger workforce, a stronger organisation. So, we had to ensure that it was a thoroughly robust process, which it was, we had cross party input, we had partners and different areas within the workforce, who were all integral to the recruitment process.

I would say that we were fortunate to find Emma when we did, to be honest, she spoke of her values and what she wants to deliver here in terms of transforming Tameside. But of the key things that she said, that she feels like people need to feel reflected - were the reason why she was the right person for the job.

## **So Emma, what did you know about Tameside before you took on the role of Chief Exec?**

**CE:** When the job was advertised, I was really conscious that the council was at a pivotal time and that it was definitely moving in a direction with lots of new ambition.

So, I think my impression of the council was somewhere where there was lots of enthusiasm, with a strong, loyal cohort of colleagues working

across the organisation. Lots of Tameside employees are Tameside residents and that's really important. I think it gives a sense of an organisation which has put itself in a position where it wants to move forward and deliver great things for the people of Tameside.

The council's had some challenging times in the preceding 12 to 18 months, but my impression was the council was moving forward and that's an exciting proposition for me. Lots that needed doing, and I like a challenge, but lots of positivity as well.

## **For those who don't know what is involved in the role of Chief Exec, what are your duties and what are you responsible for?**

**CE:** Local councils are local government, so the easiest way to explain it is like national government, but locally. So, politicians lead the organisation, set the political direction, and then as chief executive, I'm the most senior officer. I'm responsible for all of the workforce and supporting the politicians in terms of implementing the policies they establish and also delivering all the services through the colleagues that work across the organisation. We span from children's social care, education,

adult social care, public health, environment, green space, housing etc.

There's a real breadth of service. So my job, from a council point of view, is to lead all of the officers delivering all of those services. But then it goes a little bit beyond that, because in public sector, we don't work in isolation, we work with all our partner agencies. I'm the lead person that will liaise with other councils across Greater Manchester, with the Greater Manchester Combined Authority, which sets some of the direction for the region as a whole, and to advocate on behalf of Tameside in that broader regional space. That's supporting those policies, but actually, really importantly, trying to make sure that Tameside gets a really good deal and that we get funding and we get initiatives that come from that direction as well, and then working with other partners like health and Police, to make sure that we deliver great services in partnership. It's quite a broad ranging leadership role where I'm working on behalf of the organisation, delivering for residents and so clearly one that I take very seriously.

## **How's that relationship going to differ to the one you had with the Interim Chief Executive Eleanor?**

**EL:** I think Emma brings different things; Harry was what we needed at the time in terms of creating stability. But Emma definitely brings a new vitality and stability and future proofing to the organisation. So, yeah, different but equally valuable.

It's quite strange how well we align at times. I think what's apparent to me is Emma's motivated by doing the right







things for people in Tameside, which is what motivates me.

**After your first year as Executive Leader you must be able to single out a couple of positives that you feel you've achieved in that time?**

**EL:** There have been so many, I think, for the people in Tameside for the first time, hopefully they can see the movement and transition as a local authority. I feel we've made huge leaps and bounds to try and reflect some of the things that people want to feel about where they live. So, obviously the first thing that we implemented was the car parking offer and I think it's fair to say that that was very well received.

But it also supports our local economy, it supports businesses town centre footfall in spite of the disruption in Ashton in particular with work on the market square.

The facilities management contract changes that we're looking at currently and bringing people back in house. For me, that's about my passion and motivation for ensuring that our community spaces and civic spaces are in our control, are cared for and looked after in a quick, timely, responsive manner.

Also, that staff are with Tameside as well, because I think that that's important, that there's no divide between the two. But mainly for me, it's about having seen the investment that we're making in our civic spaces across the local authority. That's absolutely the right thing that we should do and that we are doing.

But equally, having spaces that people can interact with easily.

But in terms of places I have visited - Ashton, Stalybridge, Droylsden, Denton and I'm really excited to see real change happening.

But, yeah, I mean, there's a huge amount of activity and actually it's also celebrating what we've already done, I think, as a borough. One of the best things I've done since I started was going to Ashton Old Baths in my first week.

I was blown away because I love heritage buildings and then you walk inside and you're like, this is brilliant. This combination of a fantastic heritage building with modern and thriving business entrepreneurs, startups and other businesses that are growing and expanding.

To mention a few others - we've got the masterplan for Droylsden and Ashton and the Mayoral Development Zone so there's a lot of positivity, I think, for Tameside as a whole.

**Emma, there are many projects taking place in Tameside, have you had a chance to visit any of these or get updated on them all?**

**CE:** Yes, yes, absolutely.

I certainly haven't visited them all yet. I've been here about six weeks, and so am making my way around. In fact, I've got a bit of a tour of the borough planned next week.

**You recently held The Strive Awards, how important was that?**

**CE:** Really, really important, I mean, we don't do anything as a council without the people that work for us. This was the first time that the council's ever held, as far as I'm aware, these sort of awards. The Strive Awards are all about how people live our values as an organisation, but more importantly, it's about how we celebrate successes. We had the final round of winners announced at the awards ceremony but I think for me, the real strength of these awards is that it's about colleagues recognising each other as much as management making nominations as well.

We had 500 nominations altogether and so although you get your winners and your shortlisted people that get to the final ceremony, we're absolutely promoting the successes that everyone's delivered across the whole council.

And I think that's really important because, you know, we're all human beings, we like to be recognised and acknowledged for what we do.

I think the other thing that's been fantastic is we've been supported to hold the awards by all of our sponsors. We've put very little money into hosting the awards directly because our sponsors have wanted to contribute, because they see the value of that as well.

**Thank you to Chief Executive Emma Alexander and Executive Leader Cllr Eleanor Wills, our interview will continue in our February issue!**



# Quiz Challenge

1. In physics what is measured in Amperes?
2. Which tax replaced purchase tax in the UK in 1973?
3. What would be displayed using Mercator's projection?
4. Who wrote the opera "The Barber of Seville"?
5. Who is the patron Saint of travellers?
6. In the Harry Potter stories what was sold at the Eeylops Emporium?
7. Now the World's largest restaurant chain, which fast food outlet was founded in Connecticut in 1965?
8. Where in the human body would you find the Tectum?
9. In which English county would you find Keele University?
10. Which planet in our solar system has a moon named Oberon?
11. What shape is the Italian pasta known as Conchiglie?
12. In medicine what is measured using a spirometer?
13. Which children's character has been played by actors Johnny Depp, Gene Wilder and Timothy Chalemét?
14. What colour is the "E" in the e-Bay logo?
15. According to the lyrics of the song "House of the Rising Sun", in what city can it be found?
16. What is the capital of Poland?
17. What is the name of the donkey in the "Winnie the Pooh" stories?
18. What was the name of the bumbling secret agent played by Rowan Atkinson in several films?
19. In Greek mythology, the watchman with a hundred eyes shares its name with which UK retail chain?
20. In the name of the Trade Union the NUJ, what does the "J" stand for?
21. Which planet was first observed by Johann Gottfried Galle in 1846?
22. In cricket, what is the distance (in yards) between the wickets?
23. Which French city lies at the mouth of the River Seine?
24. Where in the human body is the Cuboid Bone?
25. Who co-starred with Heath Ledger in the 2005 movie "Brokeback Mountain"?
26. Which musical duo made a cover of Frank & Nancy Sinatra's hit "Something Stupid" in 2001?
27. What is the name of the limestone headland just North of Llandudno?
28. In which winter Olympic venue city would you find the Cresta Run?
29. What is the best selling single malt whisky in the world?
30. Which Tudor monarch is credited with the formation of the Royal Navy?
31. The chef Rick Stein is mostly associated with cooking what food?
32. Which single in 1983 gave Wham! its first UK number one?
33. What is the national symbol of Ireland?
34. Which Carry On film features the characters Francis Biggar, Ken Biddle and Doctor Jim Kilmore?
35. In what year did tv and radio star Terry Wogan pass away?
36. Murophobia is the fear of what?
37. Which European language is one of the official languages of Madagascar?
38. Released in June 1996, what was the title of the Spice Girls debut single?
39. Which actor played the eighth Doctor Who?
40. The first entry in whose diary took place on January 1st, 1660?

*Stuck for an answer? Check page 30*



TO CELEBRATE THEIR 40TH ANNIVERSARY  
HYDE FUNDRAISERS PRESENT

# A CHARACTER CURRY

**AT THE AWARD WINNING INDIAN PLAZA**

From 6pm, Tuesday, February 17th, 2026 - 90 Audenshaw Road, Audenshaw, M34 5HP



A delicious character dining experience with some of your favourite characters including BB-8, Wallace & Gromit, Stitch, The Joker, Predator and more. Help us raise funds for BBC Children In Need and other charities at this fun dining experience for all the family!

ENJOY POPPADUMS WITH CHUTNEYS ALONG WITH A TASTY CURRY  
**ADULTS £20 - CHILDREN £5 (under 10 years old)**

**BOOK NOW ON: 0161 371 7474**



Presented by the volunteers of Hyde Fundraisers with kind support of Cllr Denise Ward with the management of The Indian Plaza.



# Cookery Corner

## Pea and Ham Soup

### Ingredients

4 portions - Garnished with crème fraîche and pulled ham

*This month's recipe is courtesy of the Tameside Chef - Student chefs producing fine food at Tameside College as part of their education.*

- Split peas (washed) 225g
- Vegetable stock 1 1/4 litres
- Mirepoix (rough cut) onion, leek, carrot, celery 170g
- Salt and pepper
- Bouquet garni (optional)



### Instructions

- Place the washed split peas in a suitable sized thick bottomed pan with the stock
- Bring gently to the boil, and skim off the impurities
- Add the mirepoix
- Bring back to the boil, then reduce the heat to a gentle simmer
- Cook the soup for about an hour or until all the ingredients are tender
- Before liquidising, check that the ratio of stock to veg is correct
- Liquidise the soup until smooth and correct the seasoning/consistency
- Garnish with chopped chives and dots of crème fraîche

### For the ham

- Gently boil the ham until tender
- When cooked, remove from the pan and drain/cool down
- Trim off all the excess fat, and pull or shred the ham
- At service, add the ham to the soup and garnish with the crème fraîche and chopped chives.

Both can be finished with croutons for some added texture.



## You don't have to leave your job to become a foster carer

I'm sure many people may have thought about fostering local children but feared they wouldn't be able to do it alongside their existing job and commitments.

However, respite foster care can fit around your current lifestyle and our fantastic foster carers Wayne and Vicky, from Hollingworth, are a brilliant example of how you can foster and help transform the lives of children in care while also working in another job. Wayne, 44, a full-time teacher, and Vicky, 45, a part-time teaching assistant, became respite foster carers for Tameside Council just over a year ago and spend weekends and school holidays caring for children and young people.

Wayne said: "Respite care works well because we can pick and choose what weekends and school holidays we want to work and then all it comes down to is a bit of organisation and preparation."

Respite foster care is a short-term arrangement where a foster child stays with a different foster family for a limited period of time. The main purpose is to give the child's primary foster carers a break, while ensuring the child remains in a safe, supportive environment. We're looking for more people to come forward and become foster carers



Cllr Teresa Smith

to provide stable and loving homes for vulnerable local children. The council provides full training, support and an allowance.

Vicky said: "The children just want the time, love and attention. That's something I love about kids in general, is getting to know them and boosting their confidence and telling them they can do whatever they choose to do."

Anyone can foster so long as applicants are 21 years or older, have a spare room (unless you're fostering a child under the age of two) and can offer a safe and loving home. Fostering can be flexible as there are various fostering opportunities to suit different schedules and lifestyles. I'd like to personally thank Wayne and Vicky for sharing their foster care story.

**Anyone who has been inspired to enquire about fostering themselves can get in touch with us by calling 0300 303 0321 or email [enquire@fosterform.com](mailto:enquire@fosterform.com) or visit [www.fosterform.com/tameside](http://www.fosterform.com/tameside)**

**Executive Member for Children and Families  
Cllr Teresa Smith**







Well Christmas is over and its time to take stock of all those jobs you said you would do in the New Year. As always there is a lot of work to do to get the garden and vegetable plot ready, but there are some great planting choices to make for a new look this spring.

It is true that patio container plants can be adversely affected by wet weather, so now is a perfect time to raise those pots and containers up off the ground on feet or bricks to improve drainage and to prevent water-logging. Now you can also begin to clear away dead foliage from perennials to make the beds look tidy and get them ready for spring. Although not all fruit trees should be pruned this early, you can now begin to prune back your Apple and Pear trees. It's also the time to now prune climbers away from window frames, doors and gutters. A few minutes spent doing this now will be worthwhile as when the climber come into leaf this can be a very difficult task.

Best of all January is a great month to begin attracting wildlife to your garden. By allocating just a little bit of time and space to your garden this month, you can easily attract various wildlife to your garden, let a patch become a little overgrown, adding bird feeders and water are a great start. For many people wildlife are a

welcomed addition to the garden, providing extra character and good pest control.

As mentioned earlier, now is the ideal time to start thinking about your summer flowering bulbs. You can begin to compile a list of which summer bulbs you require and include them in your garden plan for this year. These are some great choices Cyclamen, There are plenty to choose from in the shops now. Buy them in flower, to make sure you know what you have. They like to be planted in well-drained soil, and partial shade. Also consider Mahonia, with its flower spikes are packed with dainty yellow, scented, flowers,

Have you planted your garlics? Even the humble patio gardener can grow these, pop the segments from a bulbs into a seeding tray, gently water and place somewhere light to give them a head start for spring, your cooking will love you for that extra taste. Now if you have rhubarb, stick a bucket over it and force it to have tasty tender stems in a matter of weeks.

And don't forget to keep on the lookout for slugs which are still out there lurking.

## Revitalising our towns for the future

Exciting progress is underway on Ashton Market Square's transformation, with new paving, rain gardens, and landscaping taking shape.

The canopy is complete, and roof installation begins in January, offering year-round weather protection for traders and events. Modular kiosks, built by North West firm Whitecrate, arrived in November and will host food, drink, and retail traders, including Market Ground Coffee House, Wilsons Fruit & Veg, and Alf's Shoe Repairs. The transformation is starting to look fantastic. The full square reopens in spring 2026 as a lively hub for markets and community life. Ashton's Pride in Place funding will deliver further improvements for years to come.

Across the borough, Hyde has seen over £700,000 invested in greener civic spaces with



Cllr Stephen Homer

new seating, lighting, and refurbished stalls. Denton's £16.7m plan will enhance public spaces and connectivity, while Droylsden will benefit from new seating, planting, and improvements funded by £100,000, alongside new homes at Droylsden Marina. Stalybridge continues to shape public space improvements and heritage restoration at Astley Cheetham Art Gallery and library.

**Together, these projects show our commitment to creating vibrant, welcoming spaces full of opportunity for businesses and residents. There's so much more ahead for all our towns.**

**Cllr Stephen Homer, Executive Member for Towns, Transport and Connectivity**

 **Tameside**  
Metropolitan Borough  
[tameside.gov.uk](https://tameside.gov.uk)







# Ted's fun page

## FUN FACTS ABOUT MILK

Centuries ago, ancient Greeks, Romans, Egyptians, Indians, and many other cultures worldwide looked at milk as a food of the gods and valued it highly for the benefits it yields. Hindus, who make up the majority of India's population, still consider cows to be sacred animals, with milk used for religious purposes because of the purifying qualities it is believed to have.

The reason why milk looks white is because the fat and protein in it scatter light.

19th century biologist Louis Pasteur is the reason that the milk we drink today contains no harmful bacteria and is therefore safe to consume. Pasteur applied his bacteria-killing technique to beer originally and decided to experiment by doing the same with milk. We now know this process as pasteurisation.



About 73% of calcium available in the food supply is provided by milk and milk products. Milk is packed with essential nutrients including protein, calcium and vitamin D.

### Ted's Jokes

How do mountains stay warm in the winter?

*They wear snow caps*

What did the farmer call the cow that had no milk?

*An udder failure.*

Why did the rubber chicken cross the road?

*She wanted to stretch her legs!*

How many months of the year have 28 days?

*All of them.*

Why couldn't the pirate find his playing cards?

*He was standing on the deck*

What do you call a criminal at the North Pole?

*A brrrr-gular*

The average cow produces 8 gallons of milk per day; that's over 100 glasses of milk! Cows are milked 2-3 times a day.

Casein and whey protein are the two types of protein found in cow's milk. They're considered high-quality proteins as they both contain amino acids.

## SPOT THE DIFFERENCE

Can you find 6 differences in the photos below ?



Of the health benefits provided by milk are important nutrients like calcium, phosphorus and potassium, with the dairy beverage also offering a great source of protein. Drinking milk can even help to prevent osteoporosis and help you maintain a healthy weight, with many studies associating diets rich in calcium with a lower risk of obesity.

Don't throw out your expired milk – it can be used for watering plants due to its calcium, a nutrient that's crucial for plant growth.





# Pets

It's that time of year when your pets are exposed to the cold winter so here are a few tips for this winter season.

If you have a fine-coated dog, such as a Greyhound or Staffie, put a dog coat on them when you go out.

Check your cat's and dog's paws and dry them thoroughly after they've been outside. This is especially important with long-haired animals as they are prone to snow compacting between their toes and turning into ice balls which can prove very painful. If they are agreeable, you could trim the long hair between your dog's toes to help prevent this.

Clean their paws at the end of your walk as salt and grit from roads and pavements can also get lodged between their toes.

With cold winter weather ahead, car owners will be winter-proofing their vehicles by adding antifreeze. Antifreeze tastes sweet and is particularly appealing to cats and dogs, who will invariably lick their paws after coming into contact with the substance.

Seek immediate veterinary treatment if you suspect that your pet has come into contact with antifreeze. The first nine to 12 hours are critical, as after this period the toxic crystals will have already started to form on the animal's kidneys.



If you do find that your dog is less active in the winter months, make sure you adjust the amount of food you give them accordingly to avoid weight gain.

Just as cars can become fatally hot in summer months, temperatures can drop very quickly in cold weather. Always take your dog with you rather than leaving them in the car for any length of time.

Keep your dog away from stretches of frozen water as it's impossible to tell how secure the surface is. Keep them on a lead if you think they'll be tempted to jump in.

Even if your cat usually prefers the great outdoors, give them a place to do their business indoors without having to go outside in freezing temperatures.



## ON THE DRIVER'S SIDE

Motoring tips from Guide Bridge MOT & Service

January usually means that the weather is cold, wet and windy with freezing temperatures. We may also be experiencing snow! Let's picture the scene – you've just realised that you're late for that very important appointment and need to go in the car, but it's covered in snow and ice which is anyone's worst nightmare. It's common sense to know that you need to clear that snow away before you set off – many don't take the time to do it, but you do need a clear view of the road, you shouldn't make shortcuts.

You may also be surprised to know that there isn't a law to say it's illegal to drive with snow on your car, however under section 229 of the Highway Code it outlines how drivers should prepare their car before they set off after adverse weather conditions.

"You MUST be able to see, so clear all snow and ice from all your windows. It reads: "You MUST ensure that lights are clean and number plates are clearly visible and legible. Failure to do so could incur a £60 fine along with 3 penalty points on your licence, but more importantly could place your life, the lives of your passengers and the lives of those around you in danger. This also means ensuring your windscreen is de-iced on the outside and thoroughly demisted on the inside.

As for the snow on the roof, while, again, there is no law stating it is illegal to drive with snow on your roof, if it falls off onto your windscreen while driving or flies into the path of another car then you could be penalised for such offences as 'driving without due consideration' or 'using a motor vehicle in a dangerous condition' - again, not worth the risk.

Even if you're only making a two-minute journey, by not thoroughly cleaning your car of all snow, ice or condensation – including all windows, lights and even anything that could fall off into the path of another motorists – you're breaking the law and leaving yourself liable to a run in with the local bobby! That means fully wiping snow or frost from every window (a quick once over with a credit card or as in my case a CD cover is not good enough!). Use a proper scraper and de-icer. It might cost a few pounds, but it works and will save you time.

As well as the legal implications of not being able to see out of your window clearly, if you are involved in an accident it could mean you are at fault and if your car insurance company finds you were at fault through neglecting to properly prepare your vehicle, they could potentially withhold a pay-out.

In addition, it is also the law that all lights and number plates are clearly visible too. In the murky grey light that often comes with driving in wintery conditions it's advisable to drive with your sidelights or dipped headlights on so as other drivers can see you. Without this they might miss you as they pull out of a side road, leading to the same consequences as above. During the winter you will be using your lights more as you will be driving in darker conditions more often. It is important to check that they are all working and replace any that aren't.

**As a fully approved RAC garage please call us on 0161 339 5354 for any help or advice. We can ensure your car is fully ready for the winter**

# HOWARD'S PICTURES FROM THE PAST...



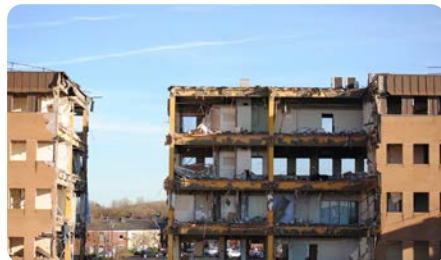
Howard Murphy has had a keen interest in photography for many years and has worked

in the Ashton Town Centre Management office and as part of Tameside Markets team. Each issue he will share some gems from his collection.



Tameside Administration Centre, locally known as TAC, was demolished in 2016. It was the centre of the borough's main departments including everything from Legal Services, Parking Services and the Environmental offices.

It was originally built in 1980 and opened its doors to staff and the public in 1981. Do you remember the old Presto supermarket that was on the lower floor when the building first opened? In later years Presto became Safeway and finally Wilkinsons occupied the area. When it was originally built the building had a small newsagents based in the bottom floor - ideal for staff going into the office - convenient for staff to pick up their daily paper or weekly magazine and snacks. A unique amenity in those early days was the addition of a nice relaxing rooftop garden where staff could go for their lunch or just relax and read.



Around the early 2,000's TIC moved into TAC! TIC, the Tourist Information Centre, moved from their small shop on Market Street at the rear of the market hall to become a well established and useful addition to the council offices.

People could find out lots of information on the attractions in Tameside like Portland Basin, Park Bridge Heritage Centre and the Sentanti & Museum of the Manchester Regiment.

Members of the public could also book their coach tickets and concert tickets there too. Queues once built up outside the buildings when Take That tickets went on sale.

Construction on Tameside One, which was built on the site of the original TAC, began in 2017 as part of the Vision Tameside scheme with Tameside Council and Tameside College.

*Images and text by Howard Murphy*

## QUIZ CHALLENGE ANSWERS

- |                       |                                     |                                   |
|-----------------------|-------------------------------------|-----------------------------------|
| 1. Electrical current | 15. New Orleans                     | 28. St. Moritz                    |
| 2. VAT                | 16. Warsaw                          | 29. Glenfiddich                   |
| 3. A Map              | 17. Eeyore                          | 30. Henry VIII                    |
| 4. Rossini            | 18. Johnny English                  | 31. Seafood                       |
| 5. St. Christopher    | 19. Argos                           | 32. "Wake Me Up Before You Go-Go" |
| 6. Owls               | 20. Journalists                     | 33. Harp                          |
| 7. Subway             | 21. Neptune                         | 34. Carry On Doctor               |
| 8. The Brain          | 22. Twenty-two                      | 35. 2016                          |
| 9. Staffordshire      | 23. Le Havre                        | 36. Mice                          |
| 10. Uranus            | 24. The foot                        | 37. French                        |
| 11. (Conch) Seashell  | 25. Jake Gyllenhaal                 | 38. Wannabe                       |
| 12. Lung capacity     | 26. Robbie Williams & Nicole Kidman | 39. Paul McGann                   |
| 13. Willy Wonka       | 27. The Great Orme                  | 40. Samuel Pepys                  |
| 14. Red               |                                     |                                   |



# WHAT'S ON

## A BRIEF ROUNDUP OF SOME ACTIVITIES THIS JANUARY

JANUARY 5TH

### Tameside Junior Chess Club

Flowery Field Primary School, Hyde, 6-8pm

Every Monday learn to play chess at this fun club which operates during term time. Admission £1 and includes refreshments. Open to all ages and abilities.

JANUARY 7TH

### Time Out

King Street, Droylsden – From 10am

The first and third Wednesday each month Time Out supports carers, people who feel lonely or isolated, those who may have lost a loved one or perhaps just having a difficult time. To find out more you can call Gwen Barr on 07491 880452 or email [timeout@thedreamcentre.co.uk](mailto:timeout@thedreamcentre.co.uk)

### Droylsden Leathercraft

The Cabin on The Ash Road Allotments, Droylsden M43 6QU

The group meets every Wednesday from 1pm - 6pm, although it's a drop in and people are free to come and go as they wish. A chance to be creative with leather crafts.

JANUARY 9TH / 10TH

### Last Panto in Little Grimley

Guide Bridge Theatre, Manchester, M34 5HJ

A one-act comedy play by David Tristram presented by Work in Progress Society Theatre Company. The Little Grimley Amateur Dramatic Society is on the brink! Membership is down to four, the audience is even smaller, and the group's finances are in tatters. But desperate times call for desperate measures—and chairman Gordon has a brilliant (or possibly terrible) idea to save the society: put on a pantomime!

JANUARY 17TH

### Real Deal Record Fair

Ashton Market Hall – From 10am

Looking to buy or sell vintage vinyl? get along to the Real Deal Record Fair at Ashton market hall and see what's on offer.

JANUARY 22ND – 24TH

### Cinderella

Hyde Festival Theatre, Corporation Street, Hyde

Presented by Tameside Youth Theatre here is a chance to enjoy some great family themed panto fun.

JANUARY 26TH – 31ST

### Stepping Out

Guide Bridge Theatre, Audenshaw Road, M34 5HJ

With a mix of comedy, drama, and dazzling routines, this feel-good production showcases the triumphs and struggles of a lovable group of misfits as they stumble, step, and shuffle their way to an unforgettable performance.

JANUARY 29TH

### Denton Luncheon Club

Victoria Park Centre, Denton from 12noon

Denton East Councillors and volunteers provide an affordable 3 course lunch offering a chance to socialise and stay warm.

### Sailors Beware

Cheshire Ring, 72 Manchester Road, Hyde, Cheshire, SK14 2BJ.

From 8pm

Son's Of The Desert – the Laurel & Hardy fan club - meet the last Thursday of the month, making new friends and sharing the laughter with some of the duo's classic comedies screened.

## FILM OF THE MONTH

### ANACONDA

Doug (Jack Black) and Griff (Paul Rudd) have been best friends since they were kids and have always

dreamed of remaking their all-time favourite movie: the cinematic "classic" Anaconda. When a midlife crisis pushes them to finally go for it, they head deep into the Amazon to start filming. But things get real when an actual giant anaconda appears, turning their comically chaotic movie set into a deadly situation. The movie they're dying to make? It might just get them killed...



## GAMING - With Bobby Kent

### ANIMAL CROSSING: NEW HORIZONS SWITCH 2 EDITION - JAN. 15

Return to the island of your dreams, but it's better than ever! Almost six years since its release, Animal Crossing's island entry is about to get even bigger. Decorate a hotel, play with more friends than before and use the power of the Switch 2 for clearer resolutions than ever before too!



## EVENT

### REAL DEAL RECORD FAIR - JANUARY 17TH

On Saturday, 17th January, Real Deal Record Fairs return to the iconic Ashton-under-Lyne Market for their bi-monthly record fair. Located inside the Market Hall near the seating area it provides a nice and sheltered environment to come along and browse.

The traders' boxes will be brimming full of new, freshly prepared stock just waiting for you guys to come and browse through. The fair opens at 9am, entry is free and they will be trading until around 3.30pm. Do you have records to sell? If so, why not pop down and speak to one of the traders, who are always happy to help.



# ADULT COURSE GUIDE

2025 | 2026

APPLY ONLINE



Tameside  
College

# > #I Can Be

> Apply now for courses starting  
January 2026! >



[www.tameside.ac.uk](http://www.tameside.ac.uk)  
0161 908 6789